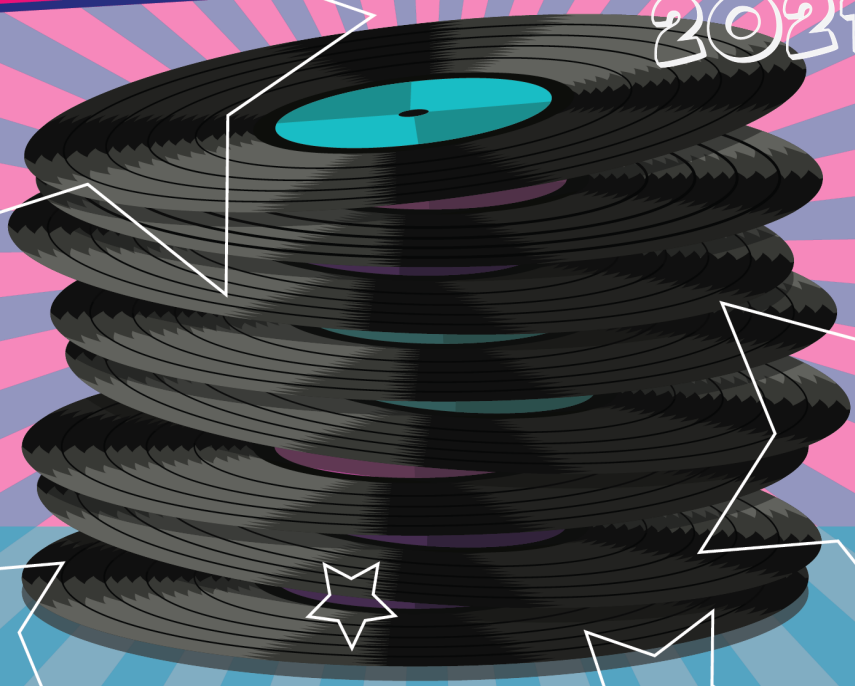


SANTA SUSANA VOCAL MUSIC PRESENTS

★ STAR ★

★ TEMBER ★

2021



SEPTEMBER 24TH AT 6:00 AND 8:00 PM

Directed by:

BEVIN ABBE

Produced by & senior project of:

CATALINA 'CAT' MAE MAYORAL

Santa Susana High School's Performing Arts Center
in correlation with the Santa Susana High School
Vocal Music Department Presents...

★ STAR ★
★ TEMBER ★

Directed by:
Bevin Abbe

Technical Advisor:
Julia Pinhey

Produced by & Senior Project of:
Catalina 'Cat' Mae Mayoral

Production Manager:
Benjamin Erman

Stage Manager:
Juliana Overin

Program Cover Design:
Revaa Kotia

Lighting Designer:
Joseph Hernandez

Technical Director:
Bailey Teal

Sound Designer:
Catalina 'Cat' Mae Mayoral

Lead Rigger:
DJ Dupree

Lead Runner:
Isabella Whitson

* Please turn off all electronics.

* Flash photography and video taping is strictly prohibited.

* There will be a professional video of the performance available for purchase.

PRODUCTION STAFF

Director.....Bevin Abbe
Technical Advisor.....Julia Pinhey
Digital Graphics Advisor.....Matthew Abbe

Production Manager.....Benjamin Erman
Stage Manager.....Juliana Overin
Assistant Stage Manager.....Mia Ansaldo

Lighting Designer.....Joseph Hernandez
Master Electrician/Light Board Operator.....Chris Badillo
Electricians.....Emily Cummings
Kolton Wilson

Sound Designer.....Catalina 'Cat' Mae Mayoral
Sound Engineer.....Lia Eacott
Sound Effects Operator.....Sarah Gabler
Sound Assistant 2.....Charlie Stebbins
Briana Nunez

Technical Director.....Bailey Teal
Stage Crew.....Renon Van Buskir
Scarlett Harris
Quinn Taylor

Lead Rigger.....DJ Dupree
Rigger.....Nico Bayot

Lead Runner.....Isabella Whitson
Runners.....Colby Anderson
Jillian Tanahara
Hadley Brady

Program Cover Graphic Design.....Revaa Kotia
Program Composition.....Catalina 'Cat' Mae Mayoral

SHOW ORDER

Show Choir

Don't Stop Me Now

Words and Music by
Freddie Mercury
Arr. by Mark Brymer

Soloist & Choreographed

by: Malaya Clark

Generously Sponsored by the Adler Family

Vocal Ensemble

Can't Help Falling In Love With You

Orig. REC by
Elvis Presley

Words and Music by George David Weiss,
Hugo Pretti, & Luigi Creatore

Arr. by Roger Emerson

Generously Sponsored by the Mayoral Family

Chamber Choir

Fallin'

Words and Music by Alicia Keys
Arr. by Alan Billingsley

Soloist: Elizabeth Aquilina

Choreographed by: Courtney Kleiman

and Elizabeth Aquilina

Generously Sponsored by the Coleman Family

Abbe Road A Cappella

Sir Duke

Words and Music by Stevie Wonder
Arr. by Paul Langford

Generously Sponsored by the James Family

SHOW ORDER

Concert Choir

Safe and Sound

Words and Music by Taylor Swift,
T-Bone Burnett, John Paul White,
and Joy Williams
Arr. by Mark Brymer

Generously Sponsored by the Coleman Family

Musical Theatre

Urinetown

Music by Mark Hollmann
Lyrics by Greg Kotis

Soloists: Tristan McDaniel and Olivia Zenetzis
Choreographed by: Lily Daugherty

Vocal Ensemble

Livin' On A Prayer

Words and Music by Jon Bon Jovi,
Desmond Child, and Rechie Samora
Arr. by Mac Huff

Soloist: Colin Eickhoff, Tharawan Oliver,
and Abigail Provenzano

Choreographed by: Lily Daugherty

Generously Sponsored by the Quilici Family

Soloist

It's My Party

Music by: John Gluck,
Wally Gold and Herb Weiner
Lyrics by: Seymour Gottlieb
In the style of: Lesley Gore

Soloist: Elizabeth Aquilina

Show Choir

Can't Take My Eyes Off of You

Words and Music by
Bob Crewe and Bob Gaudio
Arr. by Ed Lojeski

Choreographed by: Megan Coleman & Abby Tabolsky
Generously Sponsored by the DeLeon Family

SHOW ORDER

Concert Choir

What About Us

Words and Music by Alecia Moore,
Steve Mac, and Johnny McDavid
Arr. by Mark Brymer

Soloists: Addison Penney, Sofia Molina
and Brooklynn Garcia

Generously Sponsored by the Brown Family

Abbe Road A Cappella

In Your Eyes

Words and Music by
Peter Gabriel
Arr. by Nicolas Wright

Soloist: Natalie Miranda
Beatboxer/VP: Catalina 'Cat' Mae Mayoral
Choreographed by: Brook Lebron

Chamber Choir

Viva La Diva

Original GLEE arrangement by
Adam Anders and Tim Davis
Adapted for publication
by Mark Brymer

Soloist: Indiana Aluisi

Sponsor a Song!

We would love to offer you the opportunity to sponsor one of the songs in our program and have your name listed as the "Generous Donor" who helped us purchase the music! Please be on the lookout for our "Sponsor a Song!" letter for our next concert this November!

If you are interested in sponsoring a song, either fully or partially, please email bevin.abbe@simivalleyusd.org for more information

WHO'S IN THE CAST

CONCERT CHOIR

Reagan Adams	Kate Henshaw	Sofia Scavo
Bella Bourland	Paige Kaub	Ashna Sreejith
Erin Coleman	Sofia Molina	Katrina Thulin
Quincy DeVere	Izabella Pegula	Amanda Velarde
Eva Fluegeman	Addison Penney	Kiara Williams
Brooklynn Garcia	Winnicha Phongphanich	
Elizabeth Gaspar	Aristai Sanchez	

VOCAL ENSEMBLE

Celia Arcineda	Evan Haage	Tharawan Oliver
Bella Bourland	Em Hayden	Abigail Provenzano
Minseo Cho	Aniketh Kalavakolanu	Aidan Quilici
Cassidy Dyer	Layla Leviste	Diego Velez
Colin Eickhoff	Parker Mundy	

CHAMBER CHOIR

Indiana Aluisi	Erin Coleman	Tharawan Oliver
Elizabeth Aquilina	Sofia Flores	Sophia Paventi
Olivia Brown	Sarah Herzenach	Evelyn Reyes
Alayna Campbell-	Courtney Kleiman	Sofia Scavo
Tuason	Amelie Leviant	Lauren Van Houten
Franki Chew	Faith McDonough	Emma Villasenor

WHO'S IN THE CAST

SHOW CHOIR

Kirsten Adler	Ruby DeVere	Drake Mulligan
Indiana Aluisi	Rita Dodon	Lucas Panczel
Cade Alvarez	Sofia Flores	Olivia Parish
Joshua Brewer	Aylin Gurel	Sophia Paventi
Ava Carver	Evan Haage	Gianne Po
Malaya Clark	Daisy Jemison	Puffin Proctor
Megan Coleman	Cora Kulvinskas	Abby Tabolsky
Carlos Contreras	Brook Lebron	Lauren Van Houten
Carsen Cope	Calista Loter	Alexis Vogt
Lily Daugherty	Tristan McDaniel	Olivia Zenetzis
Breanne DeLeon	Samara Moran	

MUSICAL THEATRE

Kirsten Adler	Colin Eickhoff	Tristan McDaniel
Indiana Aluisi	Bennett Epstein	Emily Minevich
Elizabeth Aquilina	Aylin Gurel	Olivia Parish
Isaac Arussi	Lura James	Sophia Paventi
Julianna Carrillo	Daisy Jemison	Puffin Proctor
Ava Carver	Cora Kulvinskas	Hannah Rich
Malaya Clark	Brook Lebron	Garratt Rinnertt
Megan Coleman	Calista Loter	Abby Tabolsky
Lily Daugherty	Jackson Mattick	Olivia Zenetzis
Rita Dodson	Madison McLaughlin	

Are you interested in becoming a sponsor of
SSHS Performing Arts?

See more information on the Fundraising Page of the choir
website www.santasusanachoir.org

WHO'S IN THE CAST

ABBE ROAD A CAPPELLA

Jaycee Dylan Alipio	Bennett Epstein	Madison McLaughlin
Indiana Aluisi	Lura James	Natalie Miranda
Elizabeth Aquilina	Courtney Kleiman	Dang-Khoa Ngo
Isaac Arussi	Brook Lebron	Ethan Strubbe
Samuel Cho	Catalina 'Cat' Mae	Abby Tabolsky
Malaya Clark	Mayoral	

Thank you!

SSHS Administration, Faculty, & Staff	The Pahnke & Abbe Families
SSHS Performing Art Boosters	Matthew, Ezra, and Langley Abbe
SSHS Performing Arts Center Docents	Parent Volunteers
Laurie & Jim Harrison	Contemporary Video Productions
Graphic Design ROP	The Adler Family
DMS Solutions	The Coleman Family
SSHS Stagecraft	The Brown Family
Patrick Hong Photography	The DeLeon Family
Lisa Flores	The James Family
Meredith De Vere	The Mayoral Family
Judith S. Pahnke	The Quilici Family



Pics By Patrick

Hong Photography



Weddings, portraits, events
10% off when you mention this ad!
Proudly supporting Simi Valley Schools

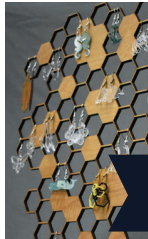
805.416.3993

heypatrick@yahoo.com



DMS SOLUTIONS

The Academy of Entrepreneurship, brings you the opportunity to support student entrepreneurship at Santa Susana High School through our very own internship (paid and unpaid) based company, DMS Solutions, (Design, Make, Sell.) What's more rigorous, relevant, and real-life than making real products for real clients? Our on-line store features products that our student/employees are ready to make just for your home! Don't see what you need, ask for a quote! Beyond making home goods, we also offer laser engraving/cutting, graphic design services, and 3D printing. Check us out at dmssolutions.us, we're ready for your order!



dmssolutions.us





SANTA SUSANA HIGH SCHOOL

The Arts, Academics, and Information Technology
3570 Cochran Street Simi Valley, California 93063 805.520.6800
805.579.6385
Matthew Guzzo Principal



Ad Sales

Each year the student at Santa Susana High School put on a variety of performances open to the public. For each of these performances we provide a high quality program, or brochure, that features local businesses. If you would like to be a part of this fantastic tradition and advertise your business while supporting the arts, please fill out the information below.

Name of Business _____ Contact Person _____

Phone Number _____ Size Ad (please circle) Full page-\$550 Half Page-\$300

Quarter Page-\$200 Business Card-\$150

Payment made by (please circle) Check # _____ -or-Cash -or-CC Payment through the ASB web store

http://webstores.activenetwork.com/school-software/santa_susana_high_sc/

Department(s) (please circle) Dance Theatre Instrumental Vocal Music Musical

Student Name _____

Signed _____

Ads may be submitted in any format. If there is a problem with the format we will contact you. If you have any questions please contact Bevin Abbe at bevin.abbe@simivalleyusd.org If your ad is in print form please give it to the student selling you the ad along with payment. If your ad is in digital form, please submit it to bevin.abbe@simivalleyusd.org or send it on a CD with the student selling you the ad. If you need an advertisement made for you, our award winning Graphic Design program can make you one for \$40. If you would like an ad made for you please put whatever information you would like below.

Please return this form and payment to Mrs. Abbe ASAP. We can only put your ads into programs that are after the date of purchase. The longer it takes to get your ad the fewer opportunities we have to promote your business.

Federal Tax Identification Number: 95-600-4692-00



ADVERTISEMENT OPPORTUNITY

Santa Susana High School Performing Arts

Prices: \$550 Full Page \$300 Half Page \$200 Quarter Page \$150 Business Card

For any additional information on corporate sponsorships, please email Mrs. Abbe at: bevin.abbe@simivalleyusd.org

When you purchase an ad sale, your advertisement will be printed in every program for the following departments: Dance, Theatre, Vocal and Instrumental Music. Your advertisement will be projected on our high definition television before each show and at intermission.

Make all checks payable to SSSH Federal Tax ID : 95-600-4692-00